



# ELECTRIC SALAMANDER



---

# ELECTRIC SALAMANDER

## ROBUST AND VERSATILE

Entirely stainless steel structure.

Use to heat, toast, au-gratin and cook.







## ADJUSTABLE HEIGHT

The moving head can be raised and lowered manually until the right distance from the products being cooked is found, based on their type and size.



---

# ELECTRIC SALAMANDER



---

## THE OPTION YOU CANNOT LIVE WITHOUT

- . Set the cooking **TIME**
- . Select one of three preset **PROGRAMS** and three different **POWER** levels.

**Bflex**

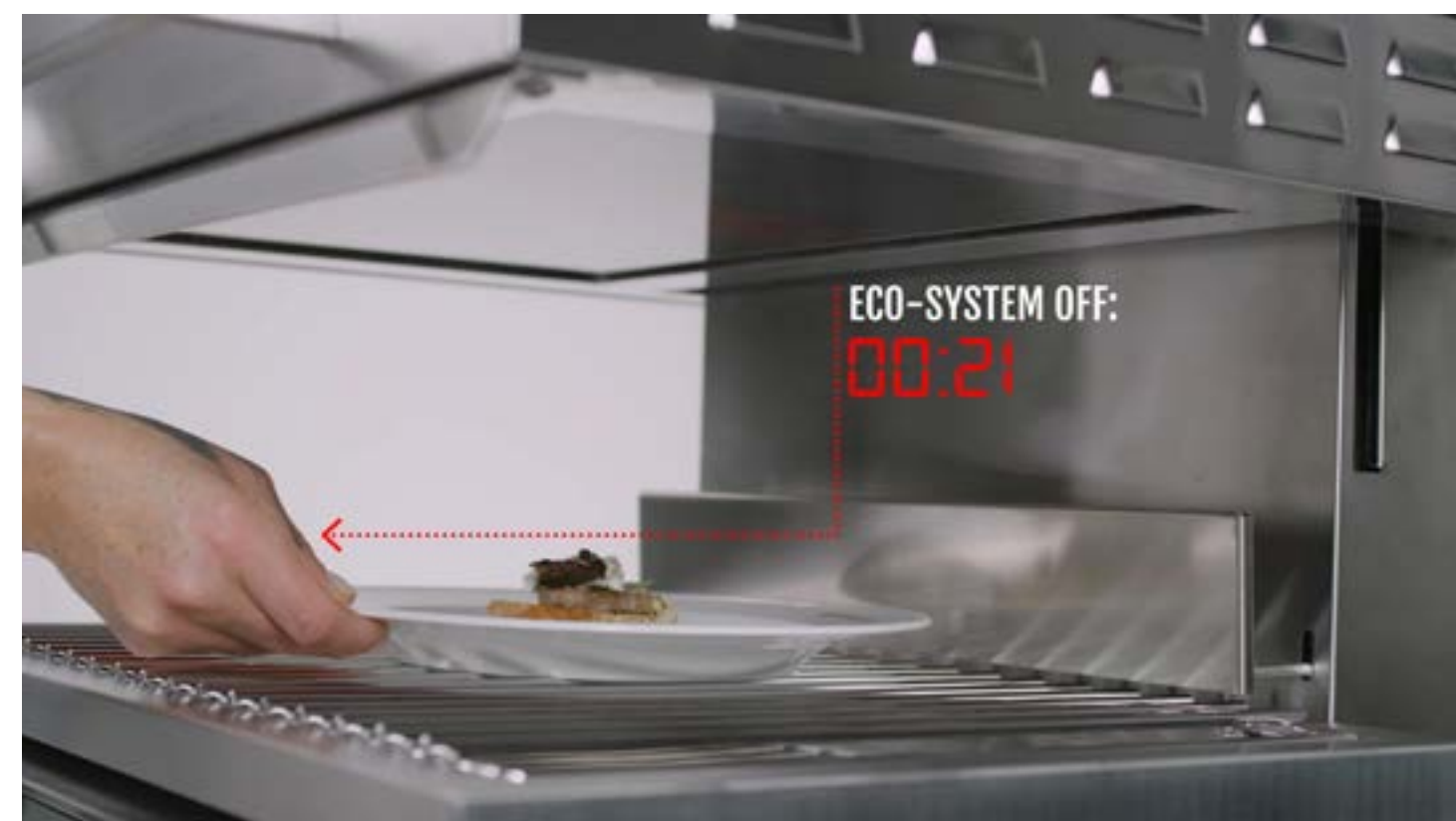




**ECO SYSTEM FUNCTION**

## **ECO SYSTEM FOR MORE ENERGY SAVINGS**

Detect the presence of the plate and turn on the heating elements. Once the plate is removed, the salamander goes to stand-by, guaranteeing even greater **ENERGY SAVINGS**.





---

# ELECTRIC SALAMANDER

## SA/E60S-BF / 4,5 KW



---

### P1 – P2 – P3

## THREE DIFFERENT PROGRAMS FOR THREE DIFFERENT POWERS

P1 1500 W

P2 3000 W

P3 4500 W

High efficiency infrared elements can reach maximum power in a few seconds.

They are protected by ceramic glass for quick and easy cleaning.





## PROGRAM P1 1500 W

The central group of heating elements is activated.



---

# ELECTRIC SALAMANDER

## SA/E60S-BF / 4,5 KW

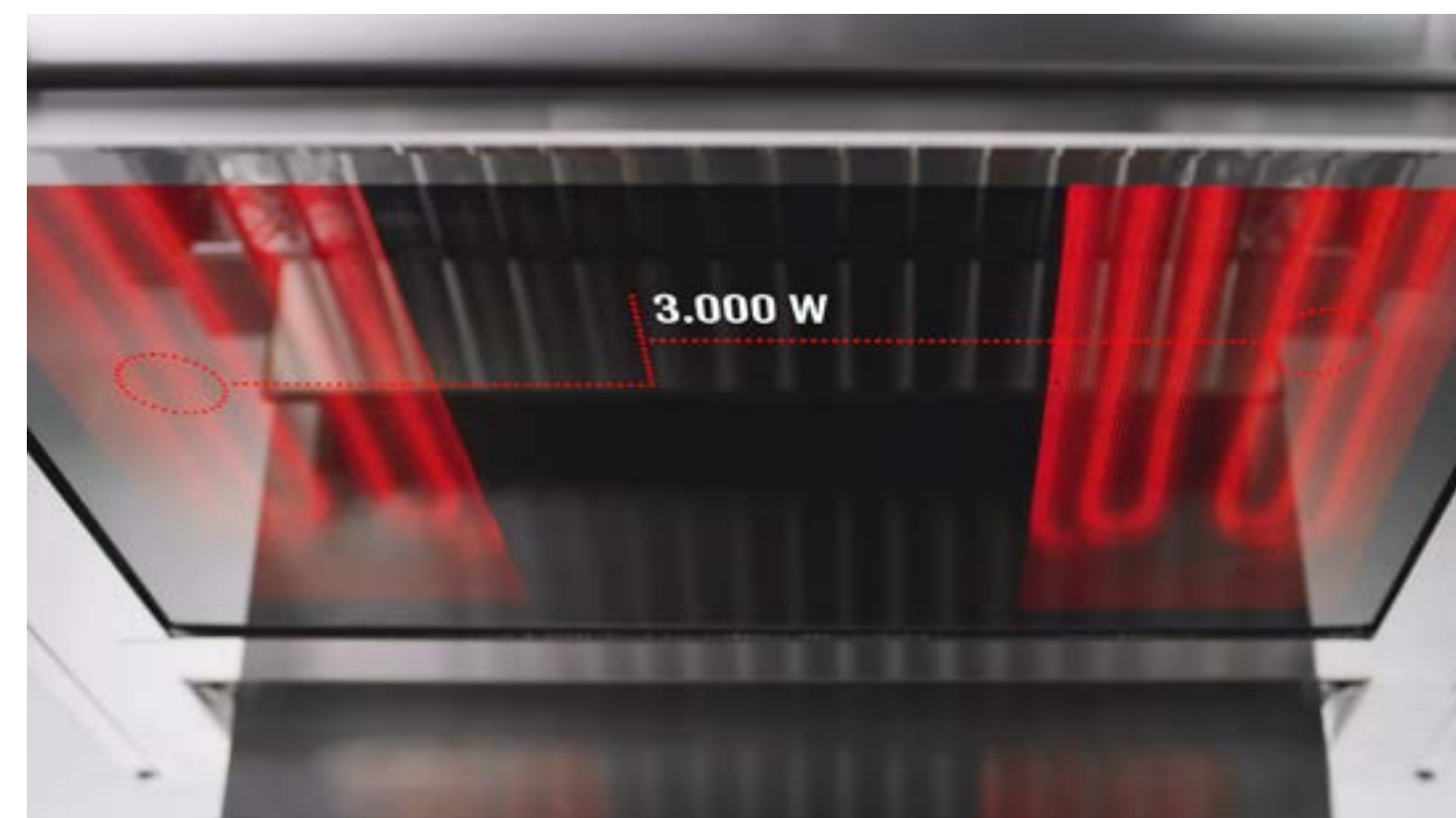


---

### PROGRAM P2

#### 3000 W

The side groups of heating elements are activated.







## PROGRAM P3 4500 W

All the groups of heating elements are activated to reach the maximum power.





---

# ELECTRIC SALAMANDER



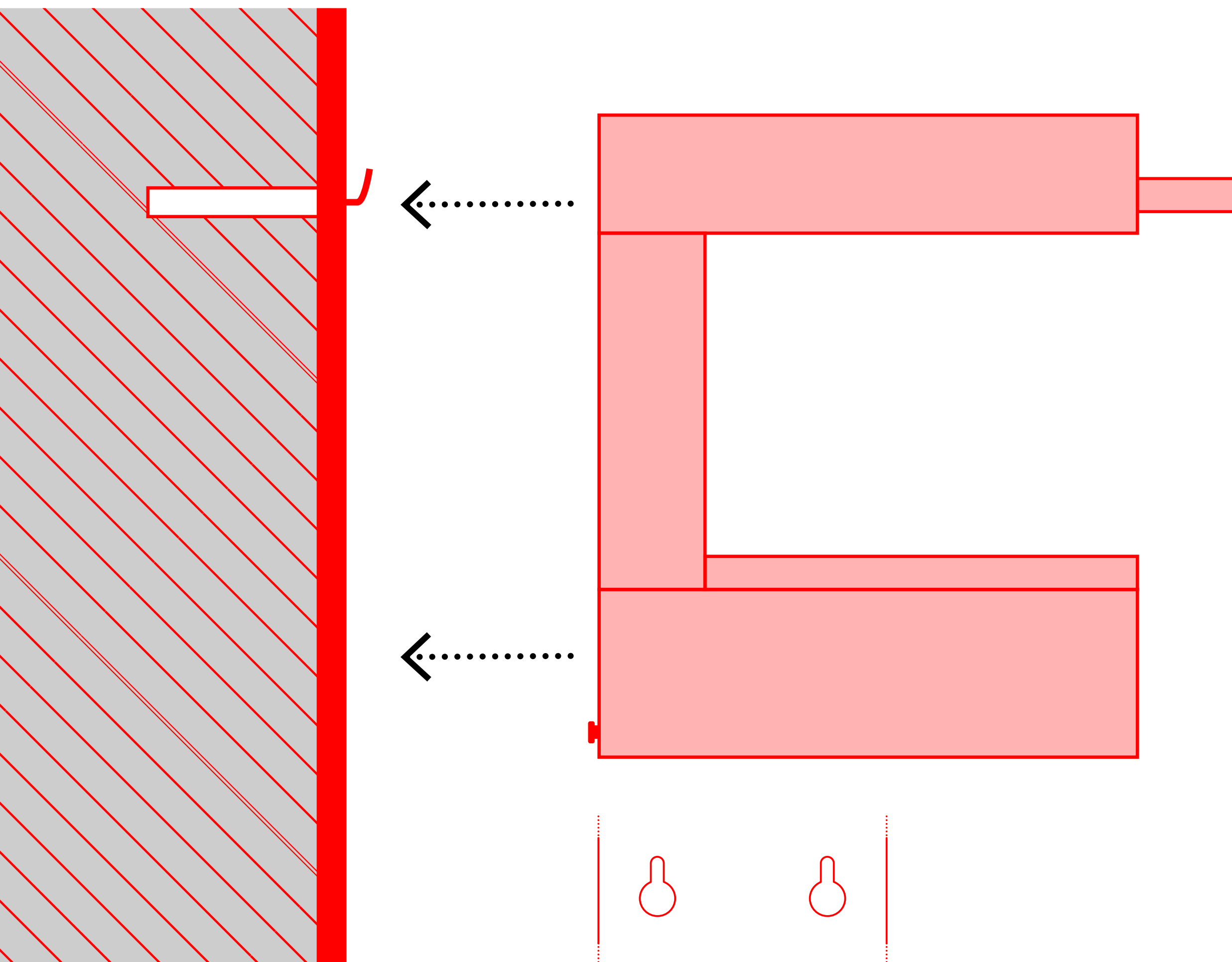
---

## REMOVABLE ELEMENTS FOR EASY CLEANING

Chrome-plated support grid with removable crumb tray.

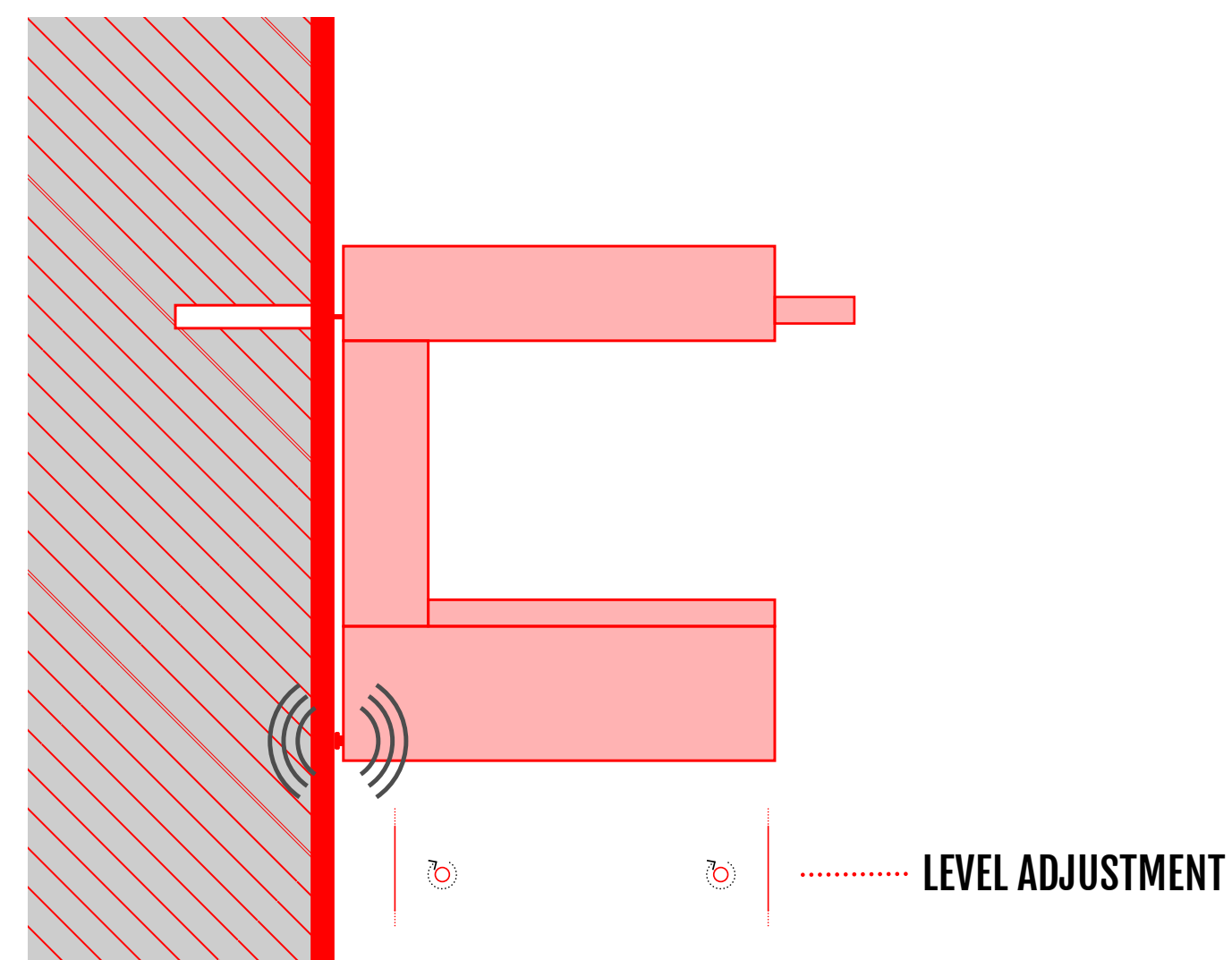






## WALL INSTALLABLE

The salamander can also be installed on the wall using a special hook and the slots on the back.





---

## AVAILABLE MODELS



---

### SA/E60S-BF

**Measurements:** 600 x 530 x 525 h

**Cooking surface:** 540 x 385 x 190 h

**Electric power:** 4,5 kW

**Voltage:** V 380 - 415 V3N~

V 220 - 240 V3~

V 220 - 240 V~

**Weight:** 60 Kg





## SA/E75S-BF

**Measurements:** 750 x 530 x 525 h

**Cooking surface:** 690 x 385 x 190 h

**Electric power:** 6 kW

**Voltage:** V 380 - 415 V3N~  
V 220 - 240 V3~

**Weight:** 80 Kg





**CLICK TO WATCH THE VIDEO**









Viale Spagna, 12  
35020 Tribano (PD) Italy  
T +39 049 95 88 700  
F +39 049 95 88 799  
bertos@bertos.com  
[www.bertos.com](http://www.bertos.com)

